

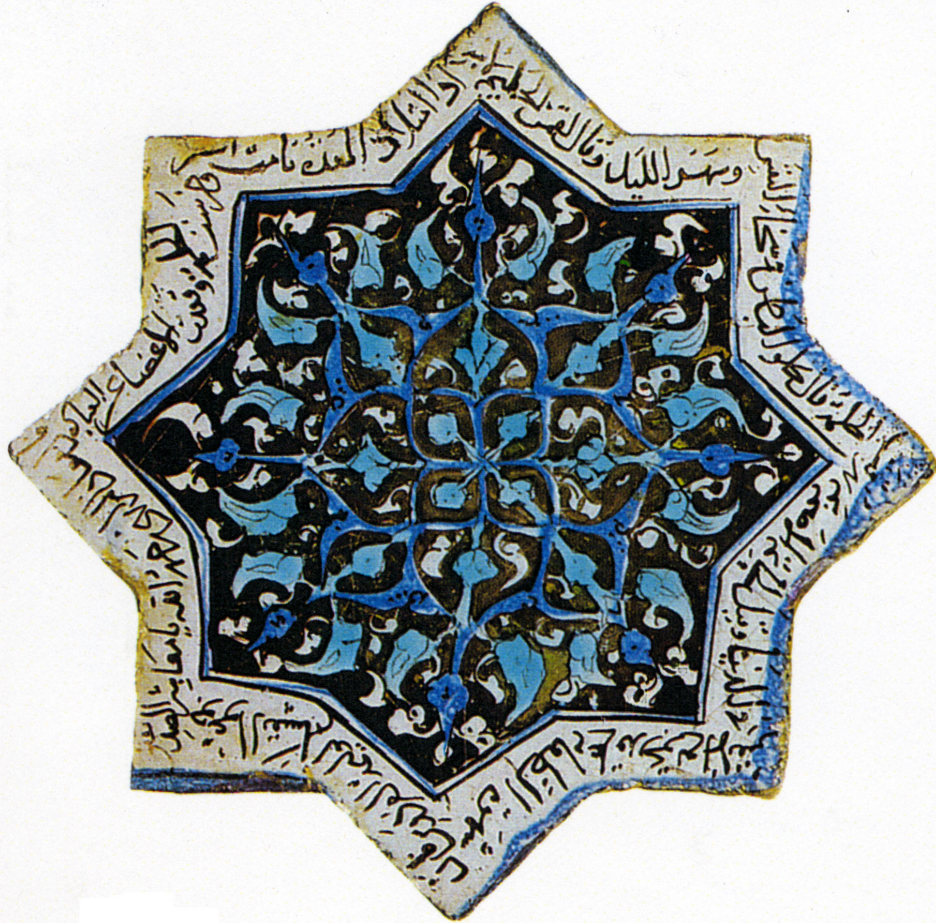
DESIGN

These cards are photographs of artworks created by people from different cultures and time periods.

- Look up! See the silhouettes, or shapes, that circle the Learning Center. Match each card to its silhouette.
- Read and discuss the information on the back of the cards.

TIMELINE

FIND THIS



THINK ABOUT THIS

13 Century

Iran

Tile

Composite body, underglaze and luster painted

7 inches wide

Match this artwork to its silhouette in the Learning Center.

The words on this tile describe fasting before the banquet of Paradise in a language called Naskh.

Can you see the letters inscribed on the tile?

FIND THIS



THINK ABOUT THIS

1860 – 1870

United States

Navajo, Native American

Wearing Blanket

Wool

69 x 48 inches

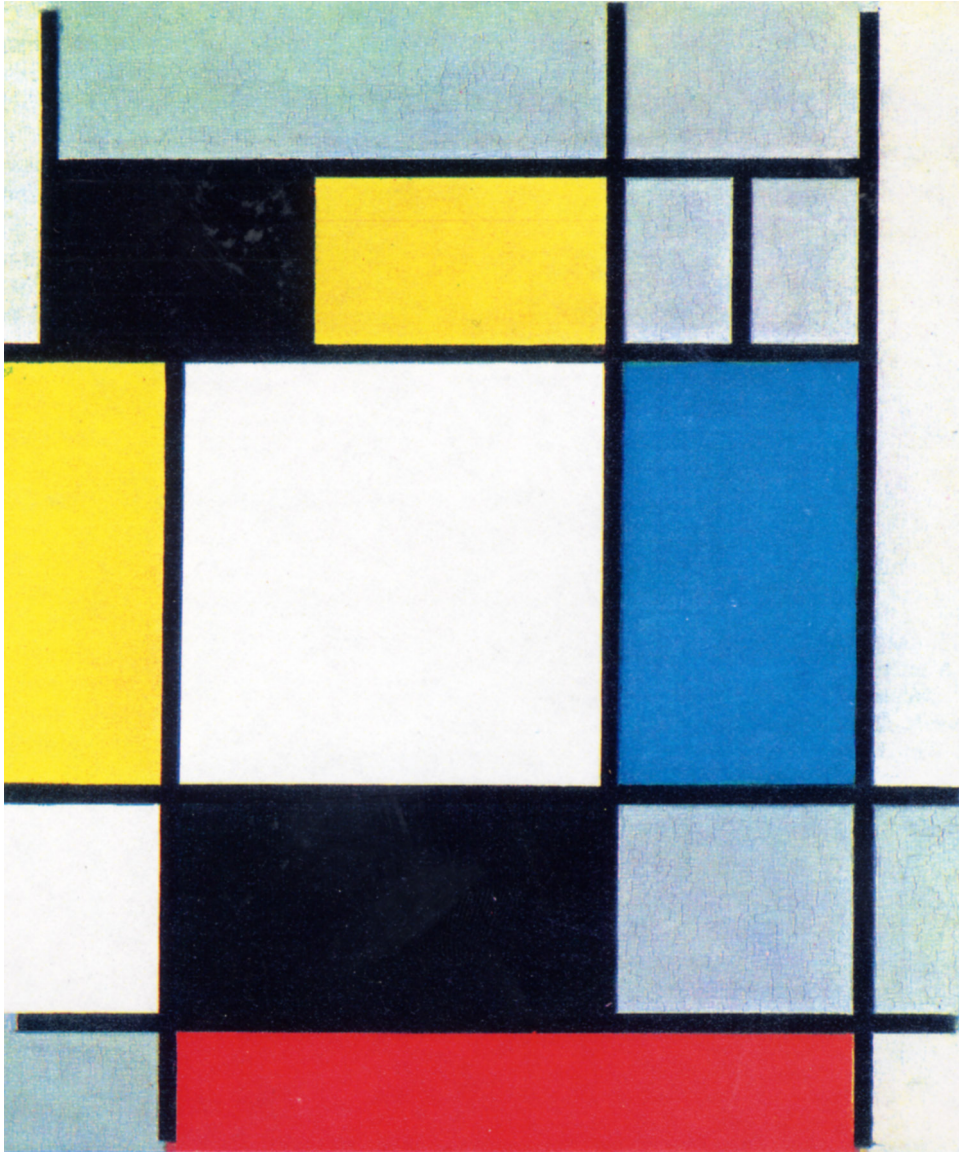
Metropolitan Museum of Art, New York

Match this artwork to its silhouette in the Learning Center.

Navajo women were famous for the blankets they wove with wool from their own sheep. This type of design was called an “Eye-Dazzler.”

Why do you think they called it that?

FIND THIS



THINK ABOUT THIS

1920

Holland

Piet Mondrian

Composition in Red, Yellow and Blue

Oil on canvas

Municipal Museum, Amsterdam

Match this artwork to its silhouette in the Learning Center.

Mondrian reduced everything to geometric shapes in his paintings.

How would you paint a landscape only using geometric shapes?

FIND THIS



THINK ABOUT THIS

c. 1940

France

Constantin Brancusi

Bird in Space

Brass

59 inches high

Guggenheim Museum, New York

Match this artwork to its silhouette in the Learning Center.

Brancusi simplified his subjects into abstract forms.

Can you see the bird in this sculpture?

FIND THIS



THINK ABOUT THIS

1950

United States

Jackson Pollock

One (Number 31, 1950)

Oil and enamel paint on canvas

106 x 210 inches

Museum of Modern Art, New York

Match this artwork to its silhouette in the Learning Center.

This artist worked in a style that was called Action Painting.

Do you get a feeling of movement when you look at the canvas?

FIND THIS



THINK ABOUT THIS

1960

United States

Alexander Calder

Four Red Systems

Painted sheet metal mobile

77 x 71 x 71 inches

Louisiana Museum of Modern Art, Humlebæk, Denmark

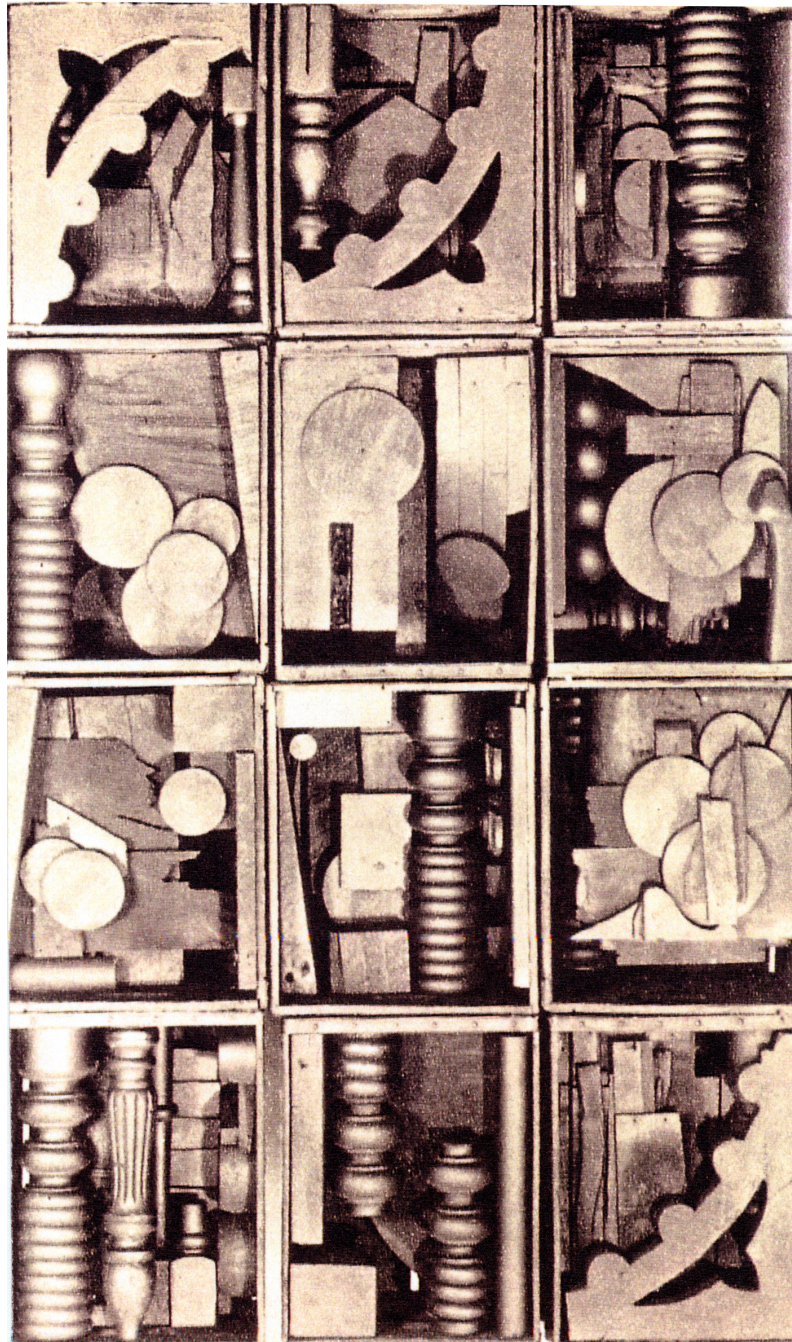
Match this artwork to its silhouette in the Learning Center.

Calder was the first artist to make sculptures that hang in the air and move. They are called mobiles.

What shapes would you use to make a mobile?

FIND THIS

THINK ABOUT THIS



1964

Louise Nevelson

Painted wood

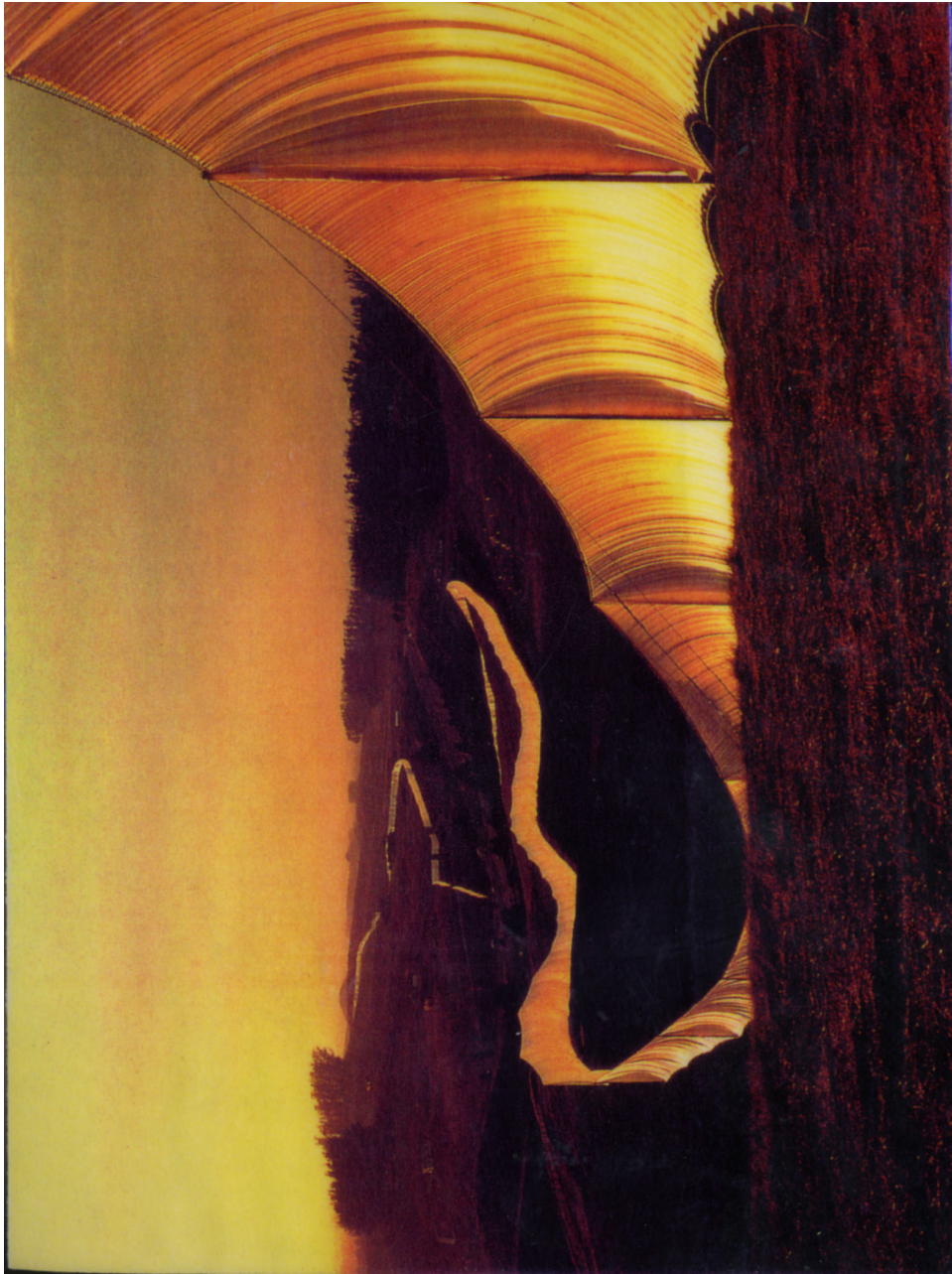
United States

Match this artwork to its silhouette in the Learning Center.

This artist is known for her stacked box sculptures.

Can you see repeating wood shapes? What are those shapes?

FIND THIS



THINK ABOUT THIS

1972 – 1976

Bulgaria

Christo

Running Fence, Sonoma and Marin Counties, California

Woven and synthetic fabric

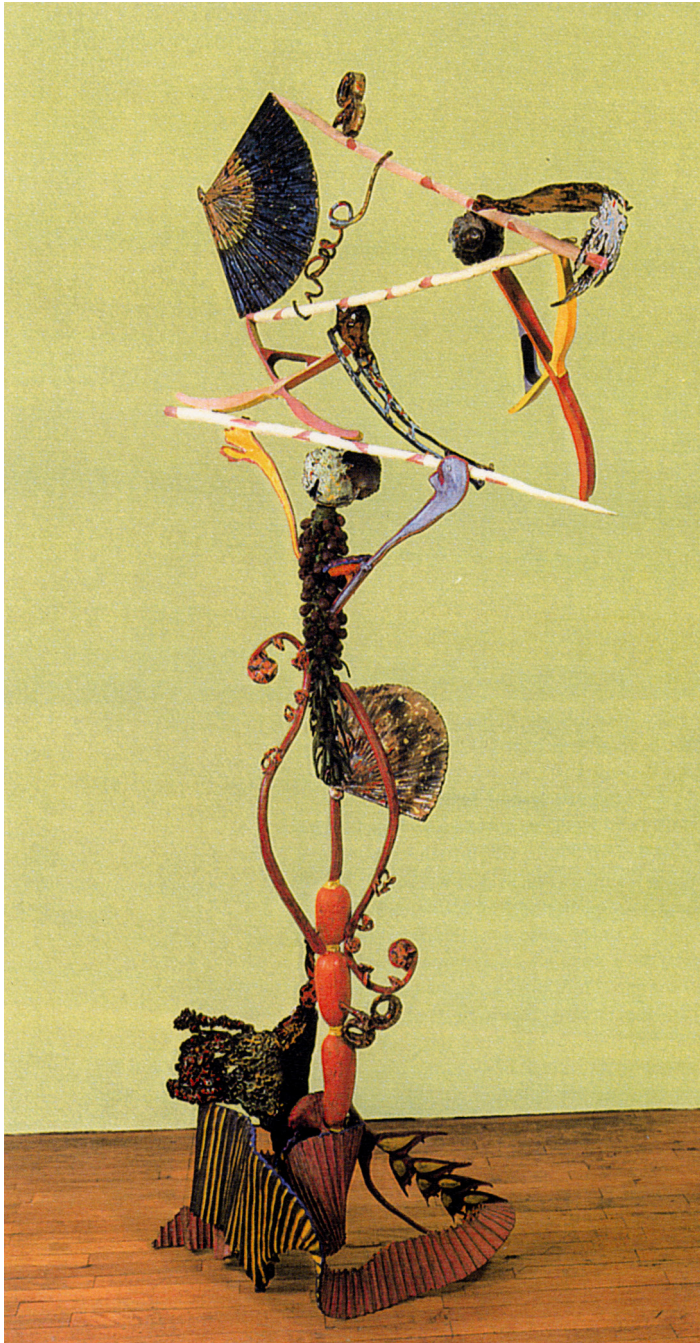
18 feet high, 24 1/2 miles long in Northern California

Match this artwork to its silhouette in the Learning Center.

This artist, with his wife Jean-Claude, has expanded our notion of what art is. They often wrapped entire buildings in fabric, or, as in this case, work with the landscape.

Can you think of a project you might do with fabric?

FIND THIS



THINK ABOUT THIS

1984

United States

Nancy Graves

Tarot

Bronze with polychrome patina and enamel

88 x 49 x 20 inches

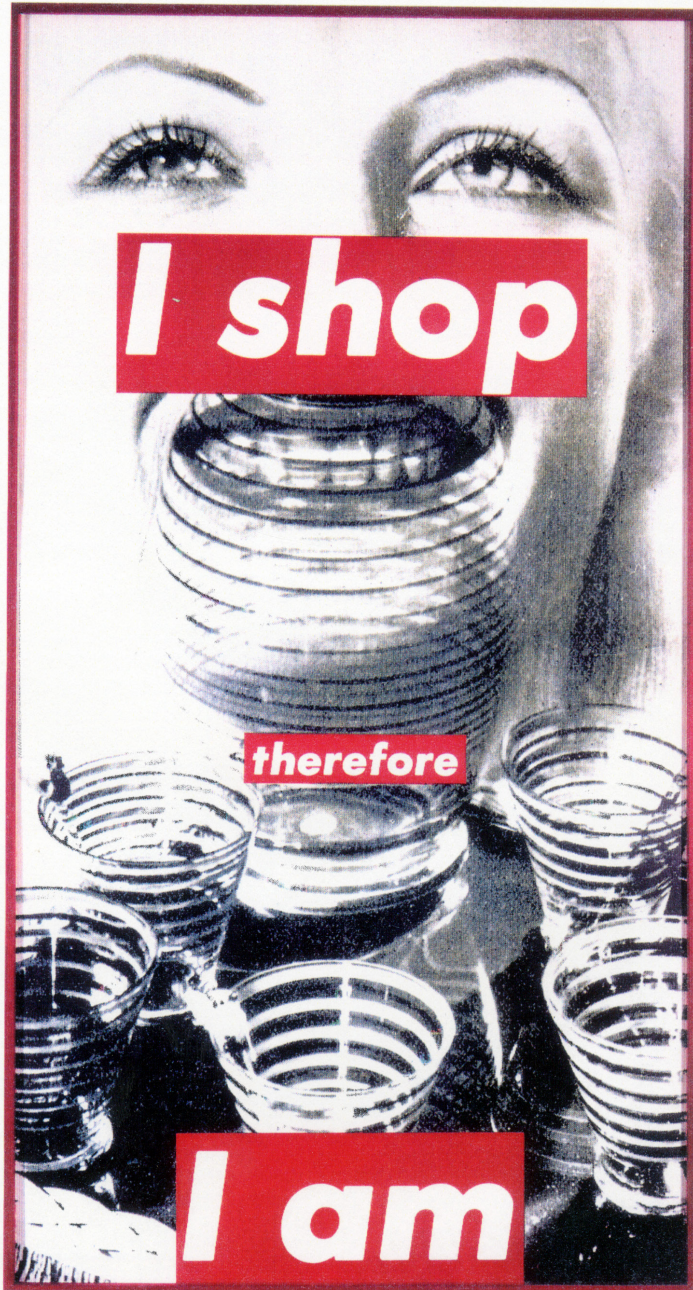
Minneapolis Institute of Art

Match this artwork to its silhouette in the Learning Center.

This artist often cast elements of nature in bronze like branches and leaves.

Can you see pieces of nature in this sculpture?

FIND THIS



THINK ABOUT THIS

1987

United States

Barbara Kruger

Untitled (I Shop therefore I Am)

Color photograph

91 x 49 inches

Private collection

Match this artwork to its silhouette in the Learning Center.

Barbara Kruger uses techniques from her background as a magazine designer and gives her opinion about the things that happen around us.

What would your opinion be about shopping?

FIND THIS



THINK ABOUT THIS

1990

United States

Joan Mitchell

Wind

Oil on canvas

102 x 157 inches

Match this artwork to its silhouette in the Learning Center.

This artist lived for many years in Giverny where Claude Monet painted the water-lilies.

Look for Monet on the Timeline. Can you see any similarities between the two artists?